

Endoca  
**Certificate of Analysis**  
 CBD GUMMIES "MOUNTAIN HIGH" 300 MG CBD, STRAWBERRY

ENDOCA LAB  
 30 N Gould St, Sheridan, Wyoming 82801 USA  
 Phone: +45-535-573-37  
 Email: ionmaps@protonmail.com

Responsible Supervisor:  
 Sample  
 Date of production:  
 Date analysis began:  
 Date sample report produced:  
 Expiry date:  
 Product ID:

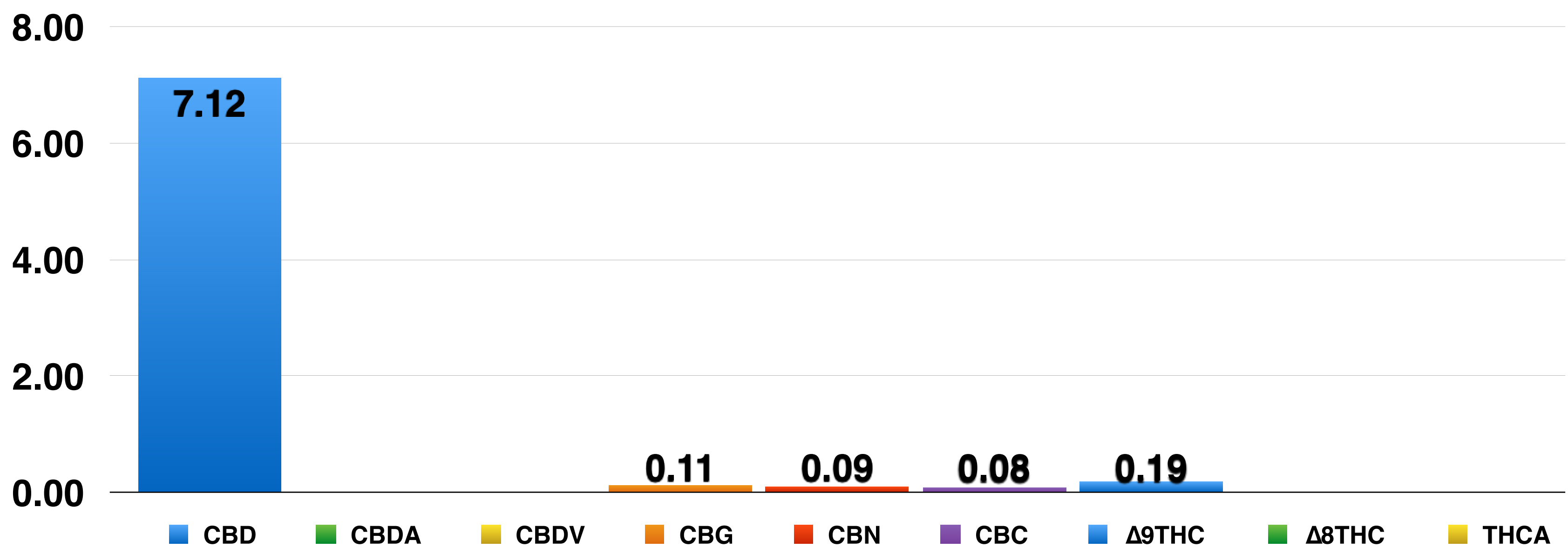
Osvald P.  
 Batch# 22GS  
 22-November 2025  
 22-November 2025  
 23-November 2025  
 11-2027  
 6016

### Cannabinoid Profile

Component	Mass (%)	Amount (mg/g)
CBD	7.12	71.20
CBDA	ND	ND
CBDV	ND	ND
CBG	0.11	1.10
CBN	0.09	0.90
CBC	0.08	0.80
Δ9THC	0.19	1.90
Δ8THC	ND	ND
THCA	ND	ND

ND - Not Detected, LOD - Limit of Detection (LOD=0.001%)

### Cannabinoids as Percent of Total Mass



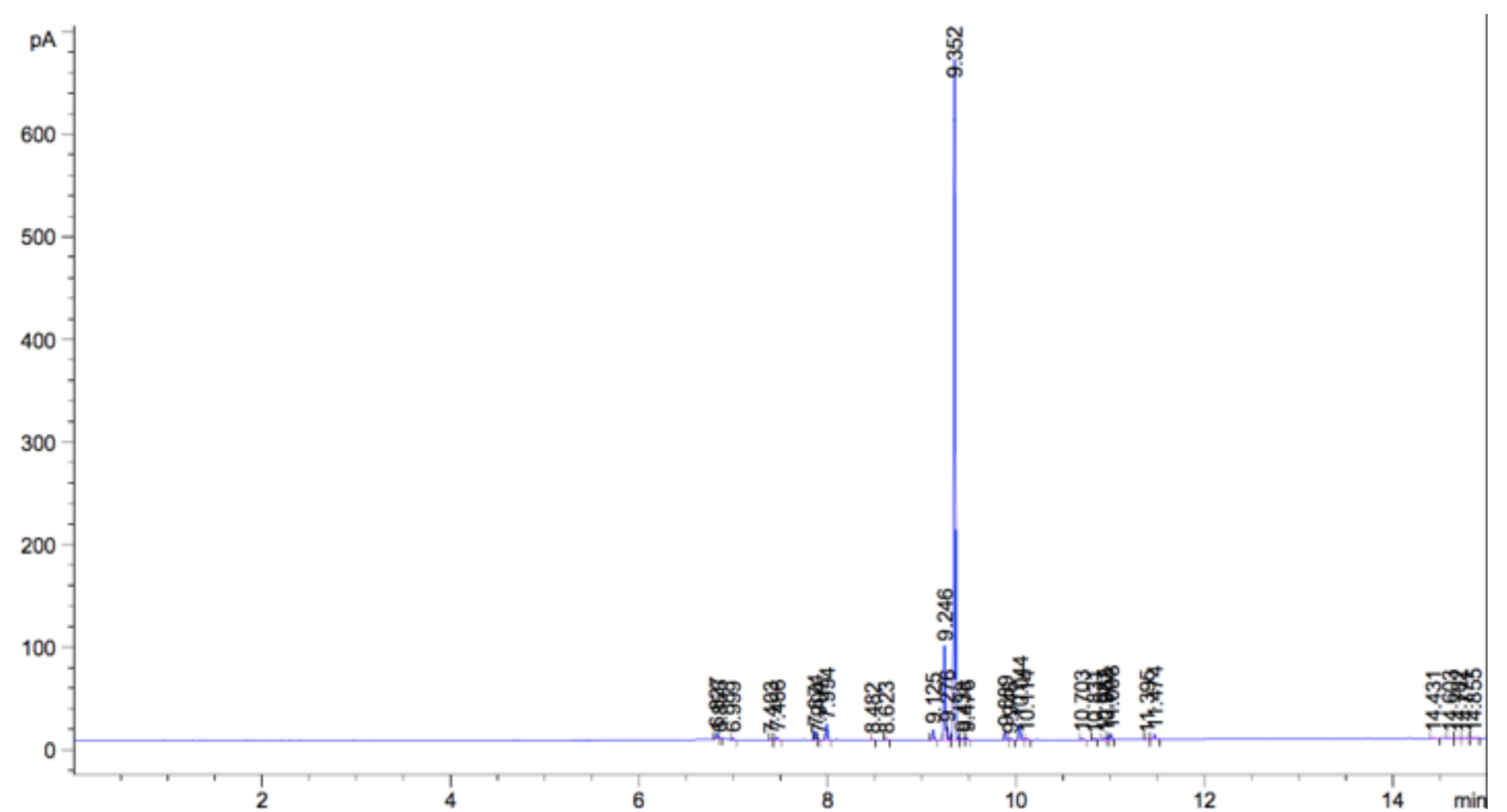
Endoca  
**Certificate of Analysis**  
 CBD GUMMIES "MOUNTAIN HIGH" 300 MG CBD, STRAWBERRY

ENDOCA LAB  
 30 N Gould St, Sheridan, Wyoming 82801 USA  
 Phone: +45-535-573-37  
 Email: ionmaps@protonmail.com

Responsible Supervisor:	Osvald P.
Sample	Batch# 22GS
Date of production:	22-November 2025
Date analysis began:	22-November 2025
Date sample report produced:	23-November 2025
Expiry date:	11-2027
Product ID:	6016

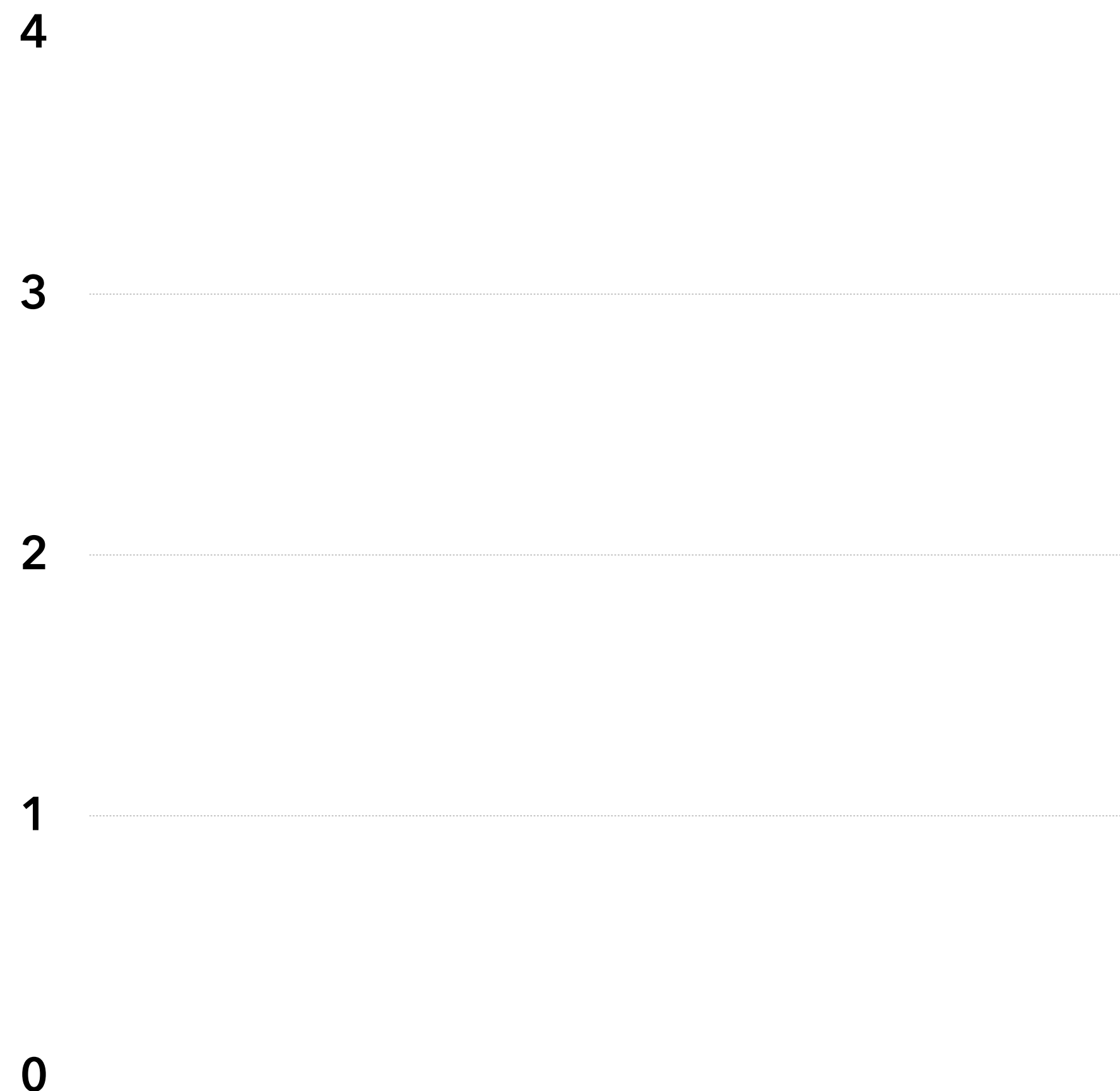
**Terpenoid Profile:**

Component	Amount %
β-Caryophyllene	<0.01
α-Humulene	<0.01
Caryophyllene oxide	<0.01
Myrcene	<0.01
α-Pinene	<0.01
Terpinolene	<0.01
Humulene epoxide II	<0.01
Limonene	<0.01
β-Pinene	<0.01
E-β-Ocimene	<0.01
Sabinene	<0.01
Linalool	<0.01



**Terpenoid Distribution**

- β-Caryophyllene
- α-Humulene
- Caryophyllene oxide
- Myrcene
- α-Pinene
- Terpinolene
- Humulene epoxide II
- Limonene
- β-Pinene
- E-β-Ocimene
- Sabinene
- Linalool



Endoca  
**Certificate of Analysis**  
 CBD GUMMIES "MOUNTAIN HIGH" 300 MG CBD, STRAWBERRY

ENDOCA LAB  
 30 N Gould St, Sheridan, Wyoming 82801 USA  
 Phone: +45-535-573-37  
 Email: ionmaps@protonmail.com

Responsible Supervisor:	Osvald P.
Sample	Batch# 22GS
Date of production:	22-November 2025
Date analysis began:	22-November 2025
Date sample report produced:	23-November 2025
Expiry date:	11-2027
Product ID:	6016

**Microbial Profile:**

Component	Mass (%)	Amount (mg/g)
<i>Candida albicans</i>	1 g	Not Detected
<i>Escherichia coli</i>	1 g	Not Detected
<i>Pseudomonas</i>	1 g	Not Detected
Staphylococcus	1 g	Not Detected
Yeast	CFU	<1 x 10 <sup>1</sup>
Mould	CFU	<1 x 10 <sup>1</sup>

**All Mycotoxins at  
 Non Detectable (ND) levels**



**Conclusions:**

All microbial residues including Listeria, Monocytogenes, E-Coli, Fungi, Salmonella and Molds are all below detectable thresholds

Endoca  
**Certificate of Analysis**  
 CBD GUMMIES "MOUNTAIN HIGH" 300 MG CBD, STRAWBERRY

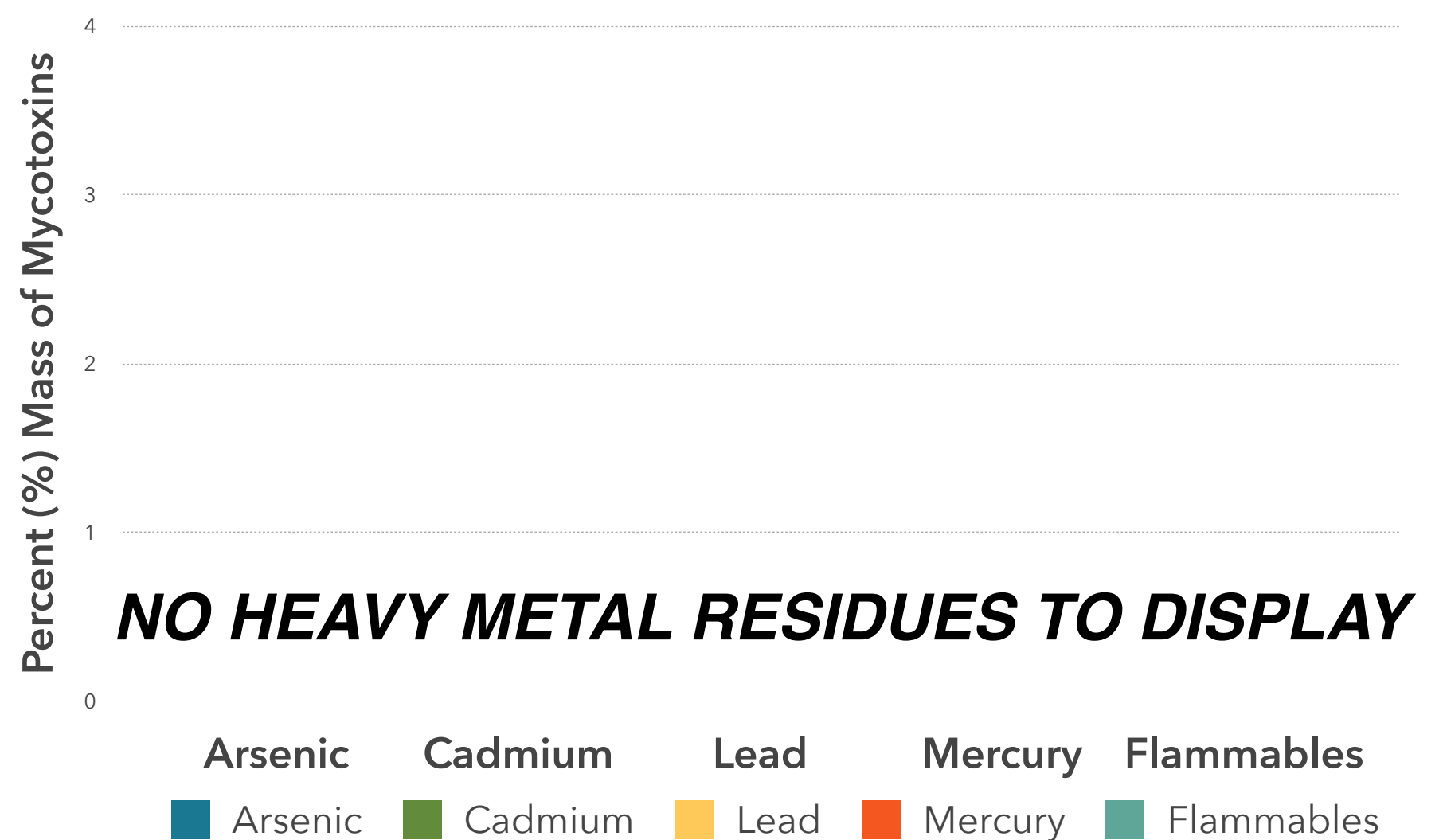
ENDOCA LAB  
 30 N Gould St, Sheridan, Wyoming 82801 USA  
 Phone: +45-535-573-37  
 Email: ionmaps@protonmail.com

Responsible Supervisor:	Osvald P.
Sample	Batch# 22GS
Date of production:	22-November 2025
Date analysis began:	22-November 2025
Date sample report produced:	23-November 2025
Expiry date:	11-2027
Product ID:	6016

**Heavy Metals Profile:**

Component	Mass (%)	Amount (mg/g)	Limit
Arsenic	< 0.01	ND	ND
Cadmium	< 0.01	ND	ND
Lead	< 0.01	ND	ND
Mercury	< 0.01	ND	ND
Flammables	< 0.01	ND	ND

**All Heavy Metals at Non Detectable (ND) levels**



**Conclusions:**

**No heavy metal residues detected.**

**No flammable residues detected.**

**No chemical residues detected.**