

Endoca
Certificate of Analysis
 CBD GUMMIES "BRAIN ENERGY" 40 MG CBD, BILBERRY

ENDOCA LAB
 30 N Gould St, Sheridan, Wyoming 82801 USA
 Phone: +45-535-573-37
 Email: ionmaps@protonmail.com

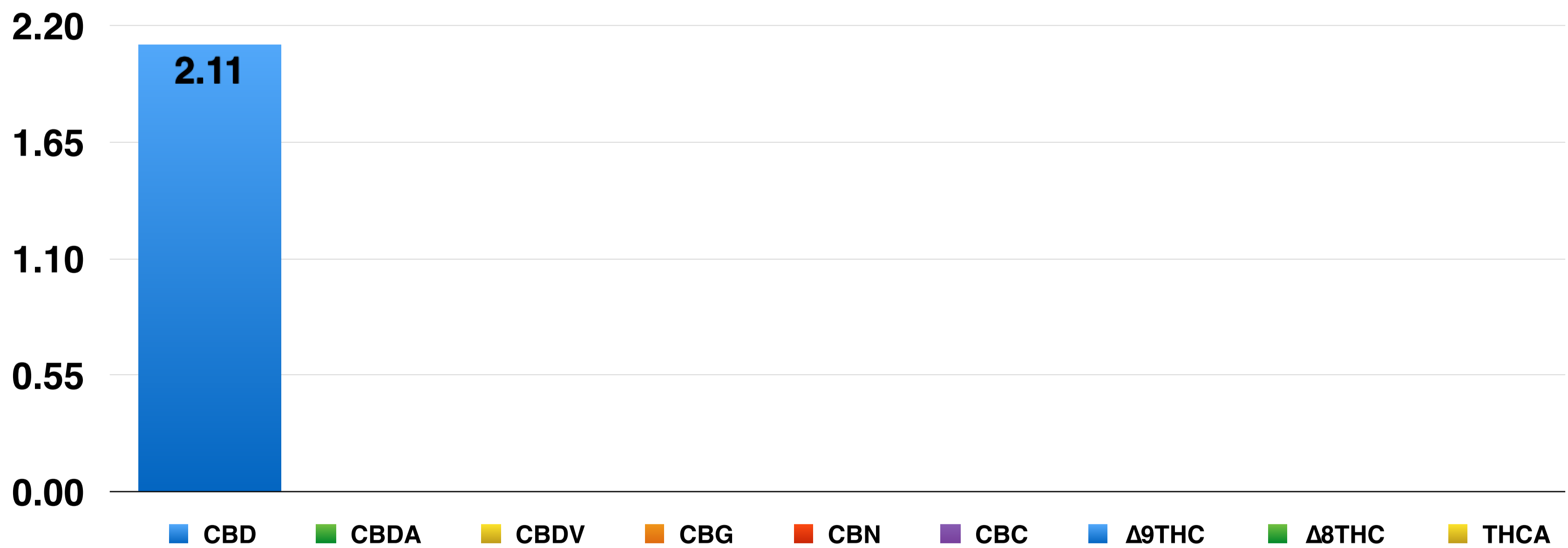
Responsible Supervisor:	Osvald P.
Sample	Batch# 2BE
Date of production:	13-October 2025
Date analysis began:	13-October 2025
Date sample report produced:	14-October 2025
Expiry date:	10-2027
Product ID:	6017

Cannabinoid Profile

Component	Mass (%)	Amount (mg/g)
CBD	2.11	21.10
CBDA	ND	ND
CBDV	ND	ND
CBG	ND	ND
CBN	ND	ND
CBC	ND	ND
Δ9THC	ND	ND
Δ8THC	ND	ND
THCA	ND	ND

ND - Not Detected, LOD - Limit of Detection (LOD=0.001%)

Cannabinoids as Percent of Total Mass



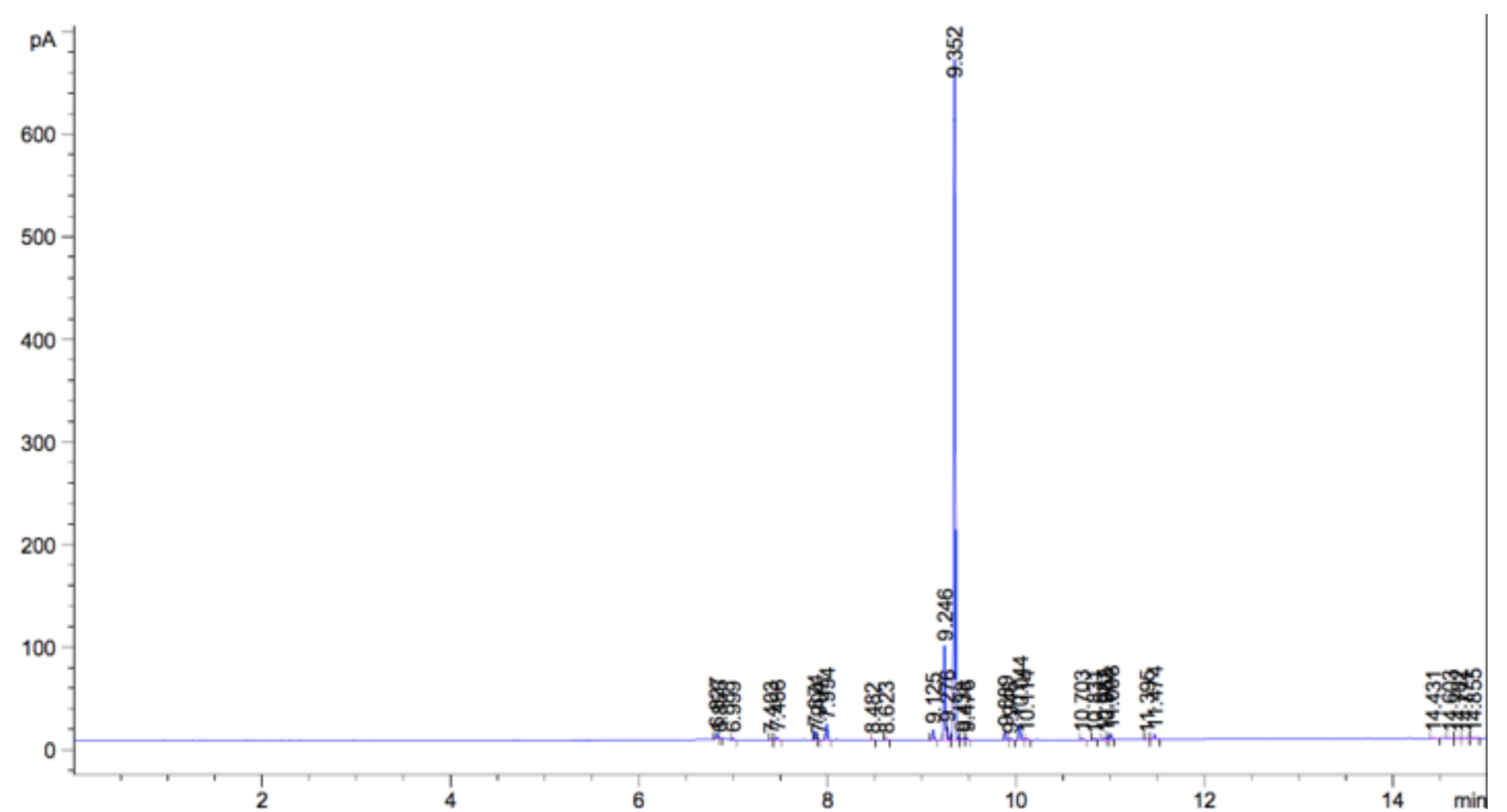
Endoca
Certificate of Analysis
 CBD GUMMIES "BRAIN ENERGY" 40 MG CBD, BILBERRY

ENDOCA LAB
 30 N Gould St, Sheridan, Wyoming 82801 USA
 Phone: +45-535-573-37
 Email: ionmaps@protonmail.com

Responsible Supervisor:	Osvald P.
Sample	Batch# 2BE
Date of production:	13-October 2025
Date analysis began:	13-October 2025
Date sample report produced:	14-October 2025
Expiry date:	10-2027
Product ID:	6017

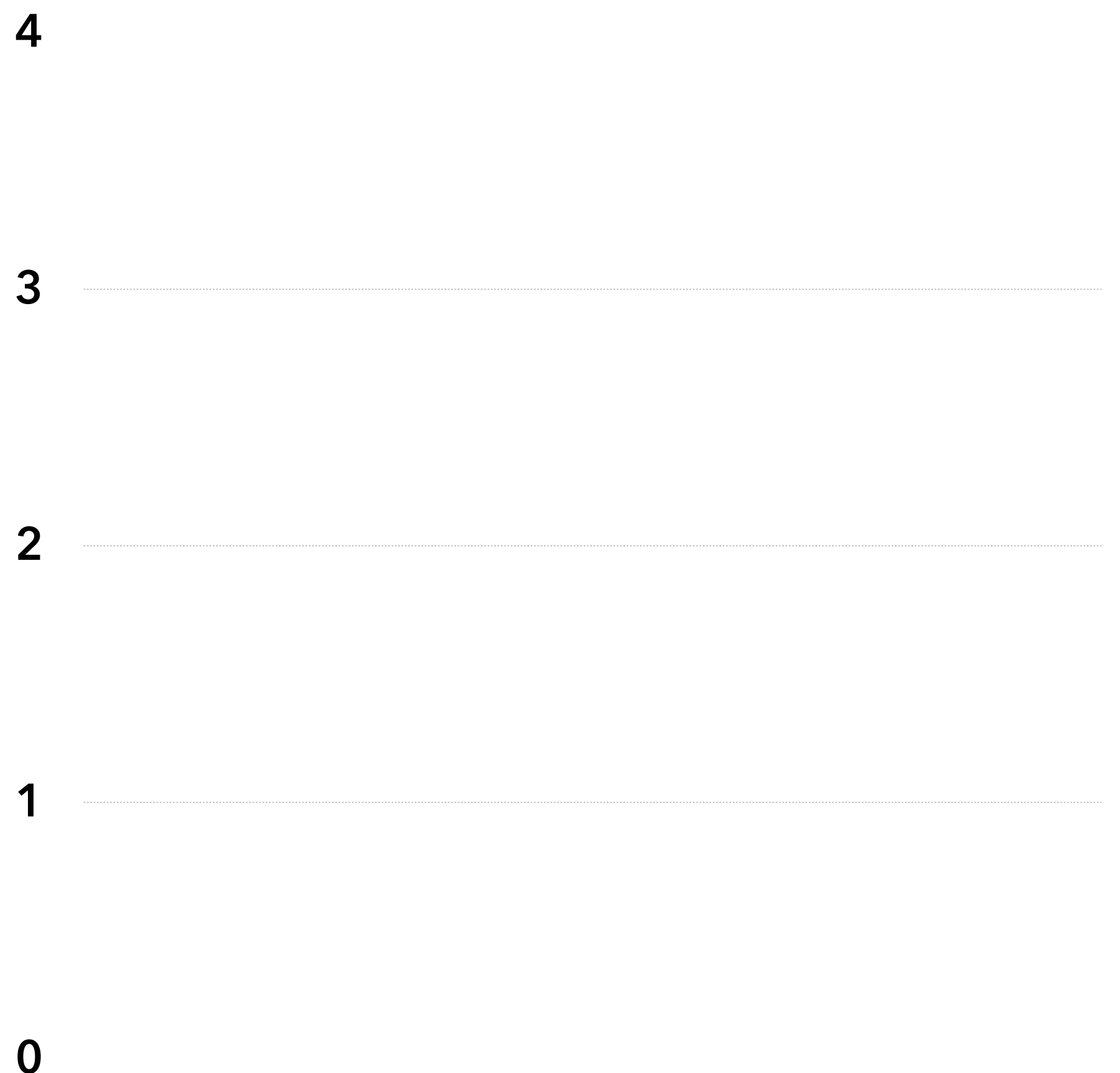
Terpenoid Profile:

Component	Amount %
β-Caryophyllene	<0.01
α-Humulene	<0.01
Caryophyllene oxide	<0.01
Myrcene	<0.01
α-Pinene	<0.01
Terpinolene	<0.01
Humulene epoxide II	<0.01
Limonene	<0.01
β-Pinene	<0.01
E-β-Ocimene	<0.01
Sabinene	<0.01
Linalool	<0.01



Terpenoid Distribution

- β-Caryophyllene
- α-Humulene
- Caryophyllene oxide
- Myrcene
- α-Pinene
- Terpinolene
- Humulene epoxide II
- Limonene
- β-Pinene
- E-β-Ocimene
- Sabinene
- Linalool



Endoca
Certificate of Analysis
 CBD GUMMIES "BRAIN ENERGY" 40 MG CBD, BILBERRY

ENDOCA LAB
 30 N Gould St, Sheridan, Wyoming 82801 USA
 Phone: +45-535-573-37
 Email: ionmaps@protonmail.com

Responsible Supervisor:	Osvald P.
Sample	Batch# 2BE
Date of production:	13-October 2025
Date analysis began:	13-October 2025
Date sample report produced:	14-October 2025
Expiry date:	10-2027
Product ID:	6017

Microbial Profile:

Component	Mass (%)	Amount (mg/g)
<i>Candida albicans</i>	1 g	Not Detected
<i>Escherichia coli</i>	1 g	Not Detected
<i>Pseudomonas</i>	1 g	Not Detected
Staphylococcus	1 g	Not Detected
Yeast	CFU	<1 x 10 ¹
Mould	CFU	<1 x 10 ¹

All Mycotoxins at Non Detectable (ND) levels



Conclusions:

All microbial residues including Listeria, Monocytogenes, E-Coli, Fungi, Salmonella and Molds are all below detectable thresholds

Endoca
Certificate of Analysis
 CBD GUMMIES "BRAIN ENERGY" 40 MG CBD, BILBERRY

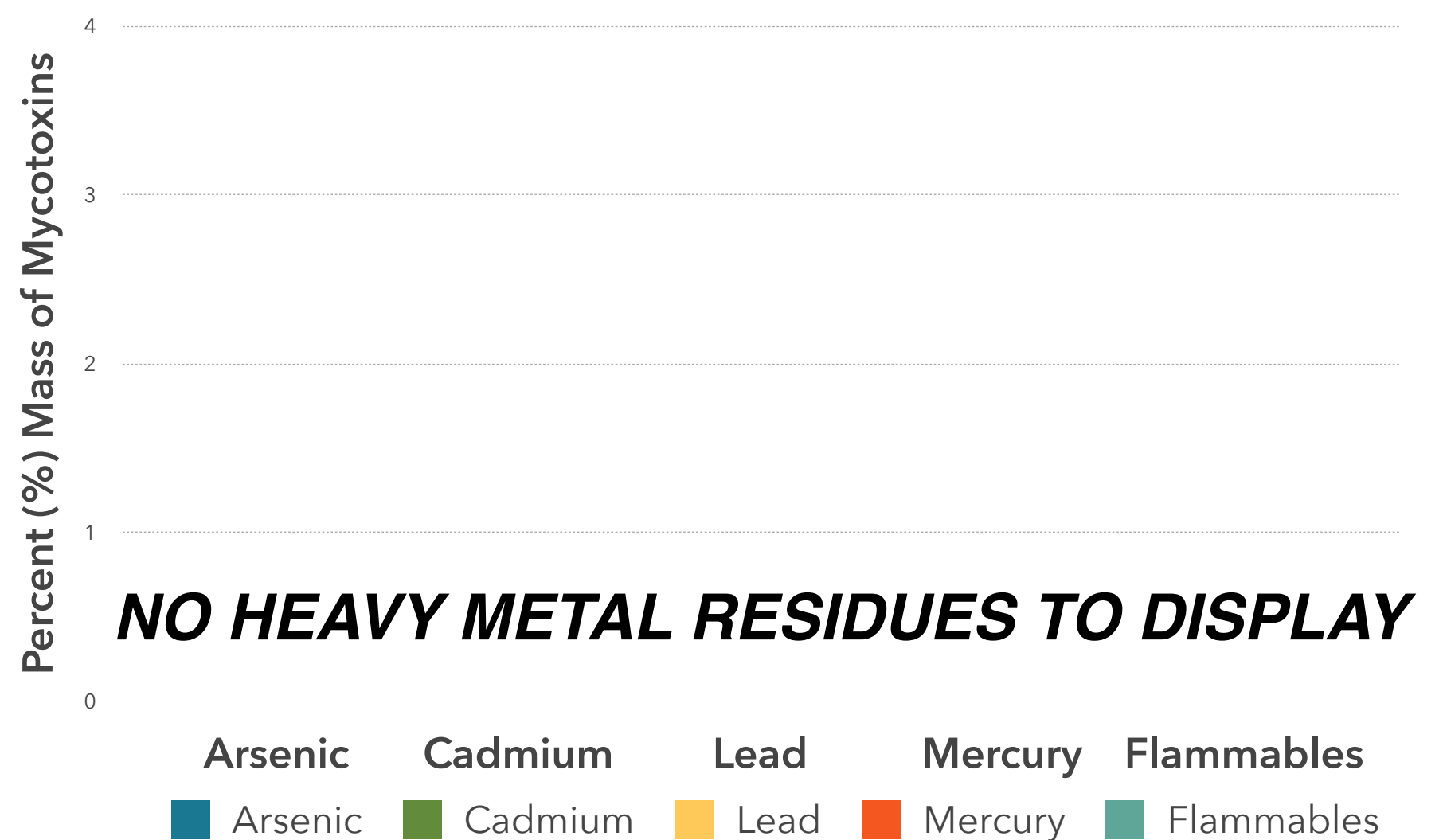
ENDOCA LAB
 30 N Gould St, Sheridan, Wyoming 82801 USA
 Phone: +45-535-573-37
 Email: ionmaps@protonmail.com

Responsible Supervisor:	Osvald P.
Sample	Batch# 2BE
Date of production:	13-October 2025
Date analysis began:	13-October 2025
Date sample report produced:	14-October 2025
Expiry date:	10-2027
Product ID:	6017

Heavy Metals Profile:

Component	Mass (%)	Amount (mg/g)	Limit
Arsenic	< 0.01	ND	ND
Cadmium	< 0.01	ND	ND
Lead	< 0.01	ND	ND
Mercury	< 0.01	ND	ND
Flammables	< 0.01	ND	ND

All Heavy Metals at Non Detectable (ND) levels



Conclusions:

No heavy metal residues detected.

No flammable residues detected.

No chemical residues detected.